

2<sup>nd</sup> Edition  
Ahmedabad

20 FRI 21 SAT 22 SUN 23 MON

November, 2026

GMDC Ground, Near Helmet Circle,  
Ahmedabad (Gujarat).

3<sup>rd</sup> Edition  
Rajkot

19 SUN 20 MON 21 TUE 22 WED

December, 2027

NSIC Ground, 80 Feet Road,  
Rajkot (Gujarat).

4<sup>th</sup> Edition  
Vadodara

21 FRI 22 SAT 23 SUN 24 MON

January, 2028

[www.engitechexpo.com](http://www.engitechexpo.com)



800+  
EXHIBITORS



80,000+  
VISITORS



80,000 SQ. METER  
EXHIBITION AREA



ORGANISED BY

Shree  
Communication

## Social Media Activities

- Whatsapp Marketing
- Facebook Promotion
- Instagram
- Youtube
- E-Mail & Influencer Marketing
- IVR Calling
- Google Ads
- Digital News
- Blogs
- Content Marketing
- Digital Page Collaboration

## Our Promotional Activities

- Rickshaw Banner (All Gujarat)
- Hoarding
- Pole Kiosk
- Radio
- Newspaper Ads
- Industrial Posters
- Bus Panel
- TV Advt.
- Invitation Cards
- Pamphlet
- Cinema Advertisement

## Benefits To Participants

- A Platform To Showcase Your Brand.
- Dealership & Distributorship Opportunities.
- Industrial Networking & Business Expansion & Promotion Opportunities.
- Showcase Your Capabilities Through The Exhibition At National Level.
- Learn New Business Idea & Trend

## Pre - Expo Benefits

- 1.5 Lakh Invitation Card to be distributed in all Our India. (100 cards) given to individual participant
- Your LOGO will be printed in our next brochure.
- Whatsapp marketing in filtered data from our database of 8 million so that you will gate interested visitors as well as genuine buyers.

## During Exhibition Benefits

- Loading And Unloading Facility Will Be Provided Complimentary By Engitech (Hydra & Forklift).
- Security Will Be Provided 24/7\* For 4 Days With CCTV Camera Recording.
- You Will Receive 48 Nos. 200ml Water Bottle Per Day.
- On Site H R Service Agency Available For Temporary Staff At Your Stall.
- Stall Interior Agencies Available For Your Stall Decoration.
- Timing Is 10:00 AM To 06:00 PM. (Last Day Of Exhibition 10:00 AM To 04:00 PM).

### 3M x 3M (9 Sq. Mtr) Stall

1 Nos. Table, 1 Nos. 5 Amp. Plug Point, 1 Dustbin, 2 Nos. Moulded Chairs. 3 Participant Badges, 3 Spot Lights, 100 Nos. Invitation Cards, 48 Nos. 200ml Bottle Per Day. Name On Fascia (Vinyl), Carpet Flooring, Laminated Stall.

### 4M x 3M (12 Sq. Mtr) Stall

2 Nos. Tables, 1 Nos. 5 Amp. Plug Point, 1 Dustbin, 2 Nos. Moulded Chairs. 3 Participant Badges, 4 Spot Lights, 100 Nos. Invitation Cards, 48 Nos. 200ml Bottle Per Day. Name On Fascia (Vinyl), Carpet Flooring, Laminated Stall.

### 6M x 3M (18 Sq. Mtr) Stall

4 Nos. Tables, 2 Nos. 5 Amp. Plug Point, 1 Dustbin, 4 Nos. Moulded Chairs. 4 Participant Badges, 6 Spot Lights, 100 Nos. Invitation Cards, 48 Nos. 200ml Bottle Per Day. Name On Fascia (Vinyl), Carpet Flooring, Laminated Stall.

### 9M x 3M (27 Sq. Mtr) Stall

5 Nos. Tables, 2 Nos. 5 Amp. Plug Point, 1 Dustbin, 6 Nos. Moulded Chairs. 5 Participant Badges, 9 Spot Lights, 100 Nos. Invitation Cards, 48 Nos. 200ml Bottle Per Day. Name On Fascia (Vinyl), Carpet Flooring, Laminated Stall.

### 6M x 6M (36 Sq. Mtr) Stall

6 Nos. Tables, 2 Nos. 5 Amp. Plug Point, 1 Dustbin, 8 Nos. Moulded Chairs. 6 Participant Badges, 9 Spot Lights, 100 Nos. Invitation Cards, 48 Nos. 200ml Bottle Per Day. Name On Fascia (Vinyl), Carpet Flooring, Laminated Stall.

### 9M x 6M (54 Sq. Mtr) Stall

6 Nos. Tables, 2 Nos. 5 Amp. Plug Point, 1 Dustbin, 8 Nos. Moulded Chairs. 6 Participant Badges, 10 Spot Lights, 100 Nos. Invitation Cards, 48 Nos. 200ml Bottle Per Day. Name On Fascia (Vinyl), Carpet Flooring, Laminated Stall.

### 12M x 6M (72 Sq. Mtr) Stall

6 Nos. Tables, 2 Nos. 5 Amp. Plug Point, 1 Dustbin, 8 Nos. Moulded Chairs. 6 Participant Badges, 12 Spot Lights, 100 Nos. Invitation Cards, 48 Nos. 200ml Bottle Per Day. Name On Fascia (Vinyl), Carpet Flooring, Laminated Stall.

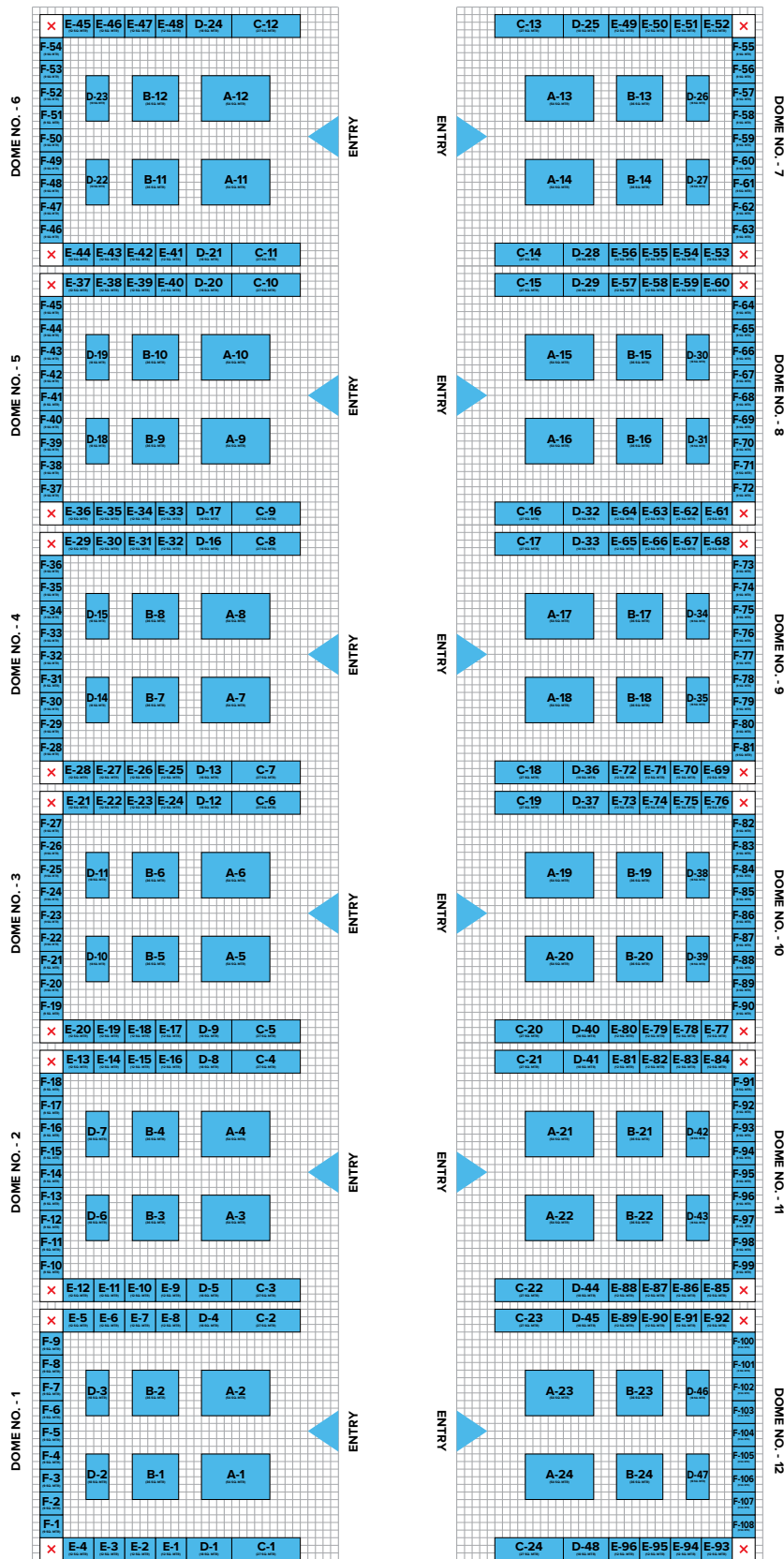
## NOTE :

**EXCEPT 150 INVITATION CARDS & EXHIBITOR BADGES  
NO TABLE, CHAIR, SPOT LIGHTS & CARPET WILL BE PROVIDED FOR BARE SPACE.**

**A.C. DOME**

**INAUGURATION STAGE**

**GENERAL CAFETERIA**



**REGISTRATION**

**ENTRY**

**OFFICE**

**F** 3M X 3M (9 SQ. MTR)

**E** 4M X 3M (12 SQ. MTR)

**D** 6M X 3M (18 SQ. MTR)

**C** 9M X 3M (27 SQ. MTR)

**B** 6M X 6M (36 SQ. MTR)

**A** 9M X 6M (54 SQ. MTR)

## Title Sponsor

15 Lakhs + G.S.T

- ▶ Complimentary Space Of 72 Square MTR.
- ▶ Main Gate Branding.
- ▶ Vvip Seating During Day Of Inauguration.
- ▶ Recognition As A Title Sponsor With Corporate Logo.
- ▶ Video Interview For All our Social Media Promotions.
- ▶ 1 Full Page Colour Advertisement In Our Engitech Directory.
- ▶ Corporate Logo in Over 1.5 Lakhs Invitation Cards.

## Co Title Sponsor

15 Lakhs + G.S.T

- ▶ Complimentary Space Of 72 Square MTR.
- ▶ Main Gate Branding.
- ▶ Vvip Seating During Day Of Inauguration.
- ▶ Recognition As A Title Sponsor With Corporate Logo.
- ▶ Video Interview For All our Social Media Promotions.
- ▶ 1 Full Page Colour Advertisement In Our Engitech Directory.
- ▶ Corporate Logo in Over 1.5 Lakhs Invitation Cards.

## Platinum Sponsor

(4 Sponsor In This Category)

10 Lakhs + G.S.T

- ▶ Complimentary Space Of 36 Square MTR.
- ▶ Recognition As A Platinum Sponsor With Corporate Logo.
- ▶ Video Interview For All our Social Media Promotions.
- ▶ 1 Full Page Colour Advertisement In Our Engitech Directory.
- ▶ Corporate Logo in Over 1.5 Lakhs Invitation Cards.

## Diamond Sponsor

(4 Sponsor In This Category)

7.5 Lakhs + G.S.T

- ▶ Complimentary Space Of 27 Square MTR.
- ▶ Recognition As A Diamond Sponsor With Corporate Logo.
- ▶ Video Interview For All our Social Media Promotions.
- ▶ 1 Full Page Colour Advertisement In Our Engitech Directory.
- ▶ Corporate Logo in Over 1.5 Lakhs Invitation Cards.

## Partner Tag

(10 Sponsor In This Category)

5 Lakhs + G.S.T

- ▶ Complimentary Space Of 18 Square MTR.
- ▶ Recognition As A Partner Tag With Corporate Logo.
- ▶ Video Interview For All our Social Media Promotions.
- ▶ Half Page Colour Advertisement In Our Engitech Directory.
- ▶ Corporate Logo in Over 1.5 Lakhs Invitation Cards.

## Sponsor 1

- ▶ Company Banner On Registration Counter
- ▶ Corporate Logo On Visitor Badges.

## Sponsor 1

- ▶ Corporate Logo On Visitor Badges.

### Participation Charges

Types of Participation	Domestic (INR)	International (USD)
Standard Booth	8,500 (Per Sq. M.)	\$ 150 (Per Sq. M.)
Bare Space	7,500 (Per Sq. M.)	\$ 125 (Per Sq. M.)

### Additional Requirement Cost

Compressor	Domestic (INR)	International (USD)
3 CFM   100 Psi	12,000 Per Connection	\$ 300 Per Connection
6 CFM   100 Psi	16,000 Per Connection	\$ 400 Per Connection
10 CFM   100 Psi	20,000 Per Connection	\$ 500 Per Connection

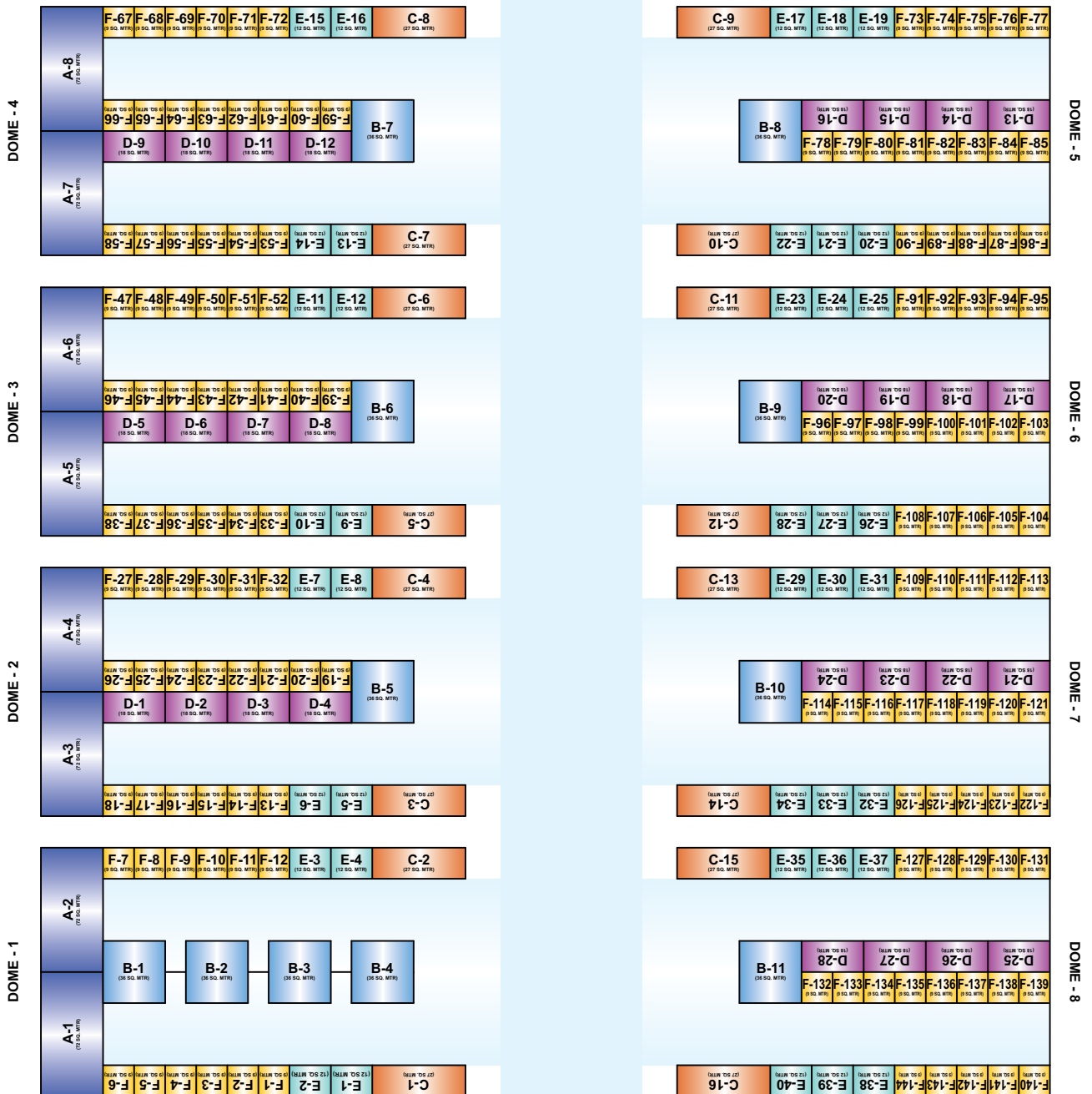
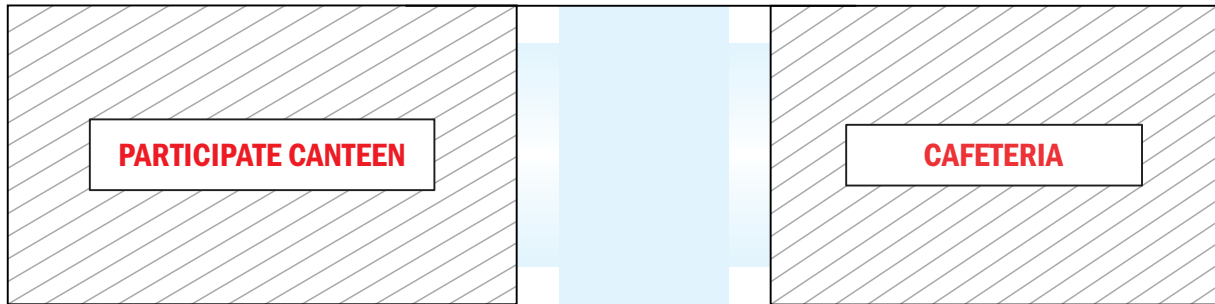
### Electricity

Domestic (INR)	International (USD)
3000 (Per HP)	\$ 80 (Per HP)

### Premium Space Cost :

2 Sides Open 15% Extra / 3 Sides Open 25 % Extra  
4 Sides Open 30% Extra

# RAJKOT UPCOMING EXHIBITION-2027



REGISTRATION

MAIN GATE

OFFICE

**F** 3M X 3M (9 SQ. MTR)

**E** 4M X 3M (12 SQ. MTR)

**D** 6M X 3M (18 SQ. MTR)

**C** 9M X 3M (27 SQ. MTR)

**B** 6M X 6M (36 SQ. MTR)

**A** 12M X 6M (72 SQ. MTR)



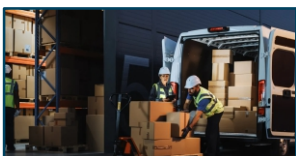
## EXHIBITOR CATEGORIES

- MACHINE TOOLS
- MACHINE TOOLS ACCESSORIES
- ROBOTIC / AUTOMATION
- CNC / VMC / HMC MFRS.
- HYDRAULIC POWER PRESS
- LATHE MACHINE
- CONTROL PANEL
- WELDING EQUIPMENT
- TRANSFORMER
- DRILL MACHINE & SPM MACHINE
- LASER MARKING & CUTTING
- HYDRAULICS EQUIPMENTS
- PRINTING MACHINERY
- PACKAGING MACHINERY
- CUTTING TOOLS
- POWER TOOL & HAND TOOL
- MATERIAL HANDLING | CONSTRUCTION
- CRANE / HOIST / CHAIN PULLEY BLOCK
- CHAIN & SPROCKET
- CASTOR WHEEL / TROLLEY WHEEL
- HEATING, VENTILATION & AIR CONDITIONING
- ELECTRICAL & ELECTRONICS
- PNEUMATICS SYSTEM
- SOLAR ENERGY
- MOTORS, GEARS & DRIVES
- BOLT / NUT / FASTENER / SPRING MFRS.
- RUBBER BELT / V-BELT
- AIR COMPRESSOR
- INDUSTRIAL SAFETY
- BERING
- ABRASIVE
- POWDER COATING EQPT. / MATERIAL
- LUBRICATING OIL / GREASE
- CURRENCY COUNTING MACHINE
- BANK & FINANCIAL INSTITUTIONS & IT & MANY MORE...

## VISITOR'S PROFILE



**MANUFACTURES**



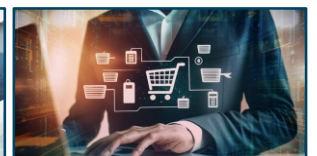
**DISTRIBUTERS**



**TRADERS**

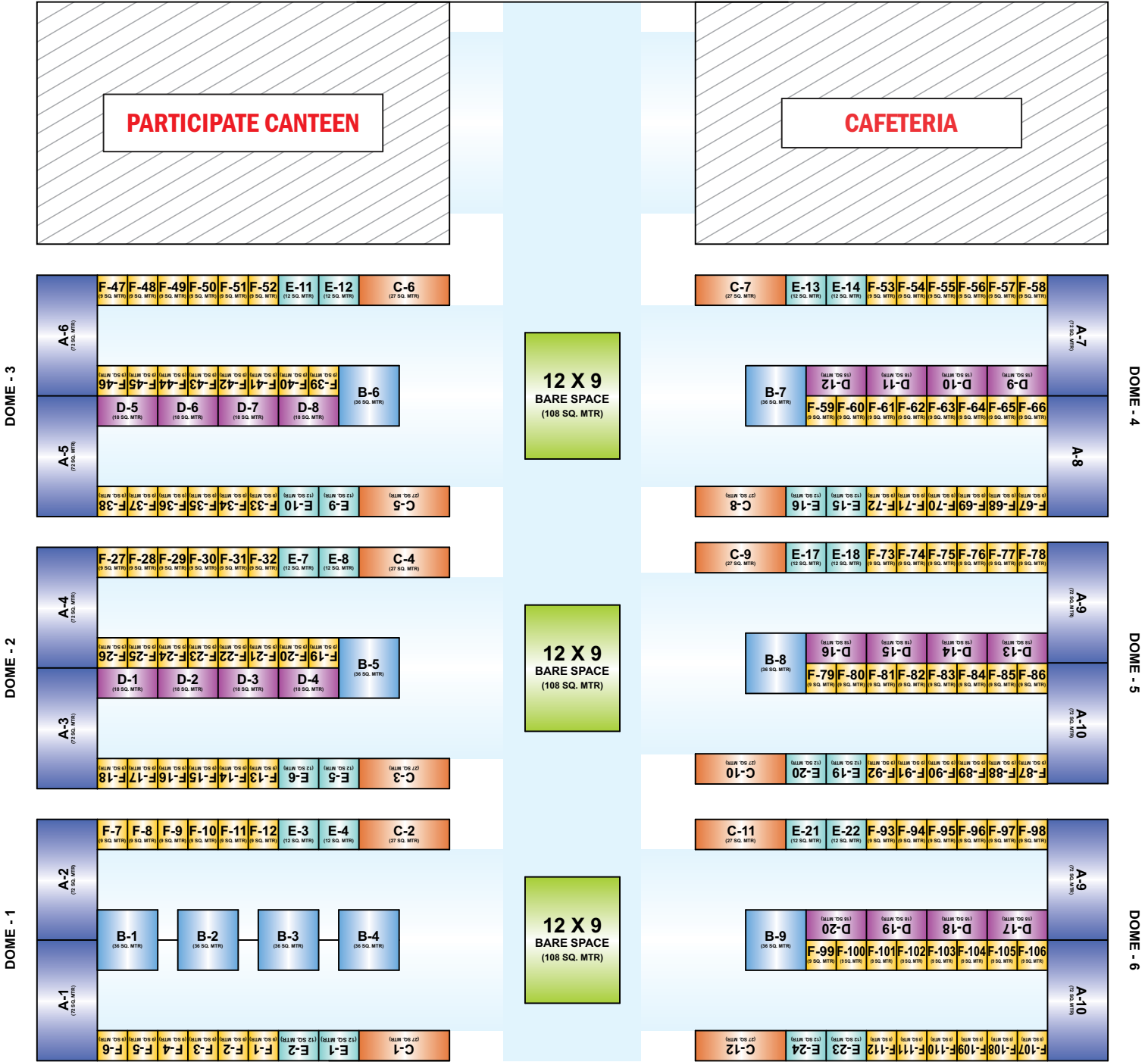


**DEALERS**



**RETAILERS**

**VADODARA UPCOMING EXHIBITION-2028**



**REGISTRATION**

**MAIN GATE**

**OFFICE**

- F 3M X 3M (9 SQ. MTR)
- E 4M X 3M (12 SQ. MTR)
- D 6M X 3M (18 SQ. MTR)
- C 9M X 3M (27 SQ. MTR)
- B 6M X 6M (36 SQ. MTR)
- A 12M X 6M (72 SQ. MTR)

**12 X 9 BARE SPACE (108 SQ. MTR)**

# OUR PAST EXHIBITION MEMORIES



# OUR PAST EXHIBITION MEMORIES



# 3D STALL VIEW



**3M x 3M  
(9 SQ. MTR)**



**4M x 3M  
(12 SQ. MTR)**



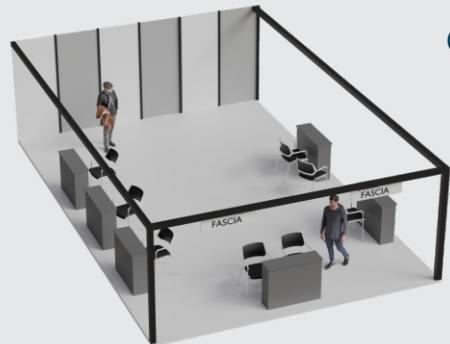
**6M x 3M  
(18 SQ. MTR)**



**9M x 3M  
(27 SQ. MTR)**



**6M x 6M  
(36 SQ. MTR)**



**9M x 6M  
(54 SQ. MTR)**



**12M x 6M  
(72 SQ. MTR)**

# OUR VALUABLE CLIENTS

**TITLE SPONSOR**

**Super** Laser

Super Hightech Technologies Pvt. Ltd.

**PLATINUM SPONSOR**



**DIAMOND SPONSOR**



**BRANDING PARTNER**



**AIR PARTNER**



**DIGITAL MEDIA PARTNER**



**MEDIA PARTNER**



**CCTV PARTNER**

